



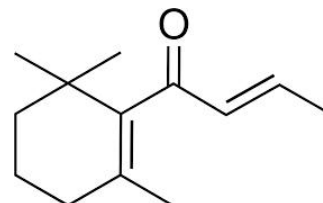
# LECHEMIE CO.,LTD

## Damascone Beta Fab

Synonyms: 1-(2,6,6-trimethyl-1-cyclohexenyl)but-2-en-1-one

### Specification Data Sheet

Structure Formula C<sub>13</sub>H<sub>20</sub>O  
Molecular Weight 192.00  
CAS Reg. No. 23726-91-2  
FEMA Code 3243  
Tariff code 2914.2900.90



|                  |   |
|------------------|---|
| Odor             | <b>FRUITY, FLORAL, INTENSE, PLUM, ROSE</b>  |
| Description      | <b>A very powerful fruity floral note. Damascone beta fab is a complex odor of rose, plum, blackcurrant, wine and tobacco.</b>  |
| Usage            | <b>Damascone beta fab gives a very distinctive character to any perfume. It is particularly valuable in rose but has also interesting effects in florals, woody, herbal, aldehydic and fruity perfumes.</b> |
| Appearance       | Colorless to pale yellow liquid   |
| Purity           | 95% min   |
| Flash Point      | 108℃  |
| Boiling Point    | CA.254℃(97 kPa)   |
| LogP             | 3.312 (est)   |
| Refractive Index | 1,4960-1,5000 at 20℃  |
| Vapor pressure   | 26 Pa (25℃)   |

|                    |  |
|--------------------|--|
| Solubility         | SOLUBLE IN WATER 194 mg/l(20℃)   |
| Storage            | Keep in tightly closed container in a cool and dry place, protected from light. When stored for more than 24 months, quality should be checked before use.   |
| Package            | 1kg/2kgs/5kgs aluminum drum, or customized package type and size.  |
| Certificate Status | N/A  |
| Safety handling    | Separately MSDS available on request   |
| Declaration        | The information provided in this data sheet is to the best of our knowledge, information and belief at the date of its publication and is, in our opinion consistent with the state of general scientific and technical knowledge at that date, but we cannot accept liability for a loss, injury or damage which may result from its use. |

Last revised: 12<sup>th</sup> July. 2024